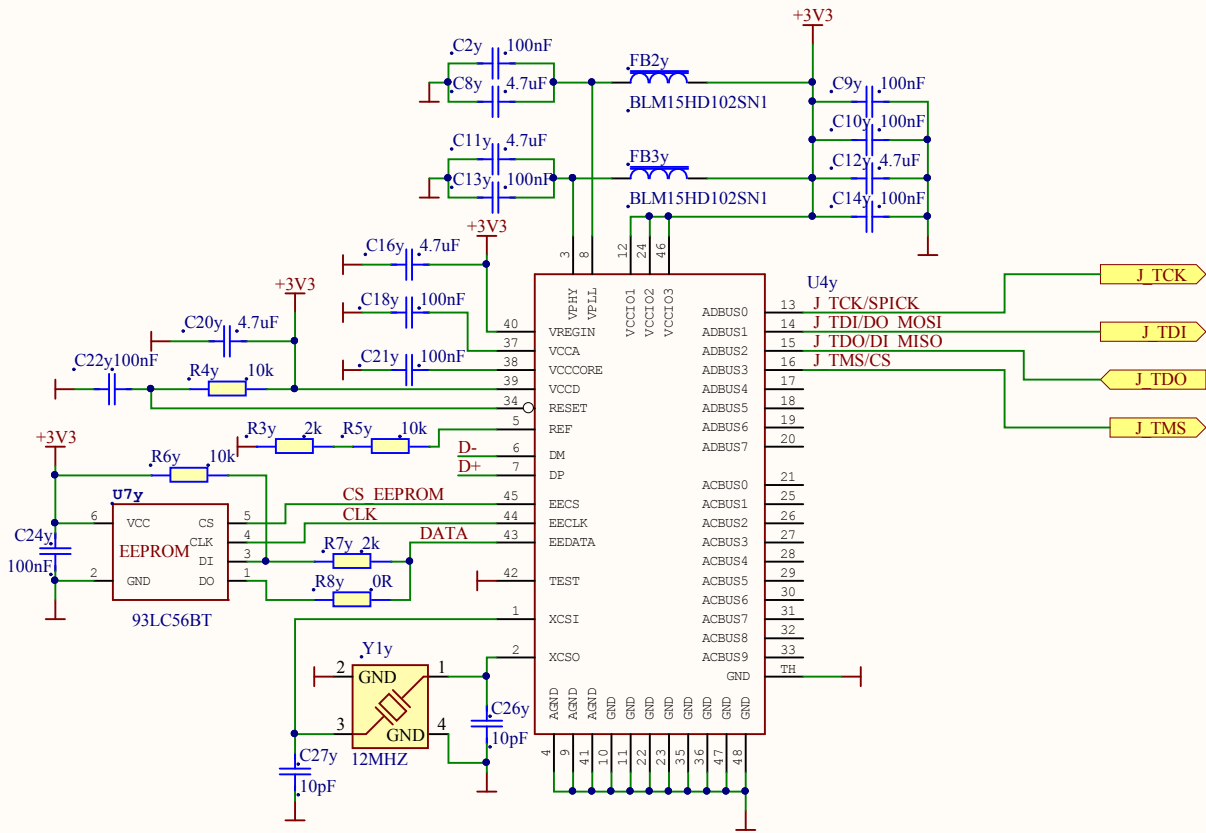
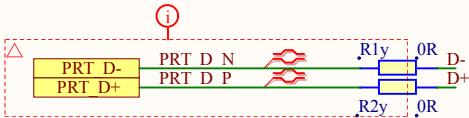
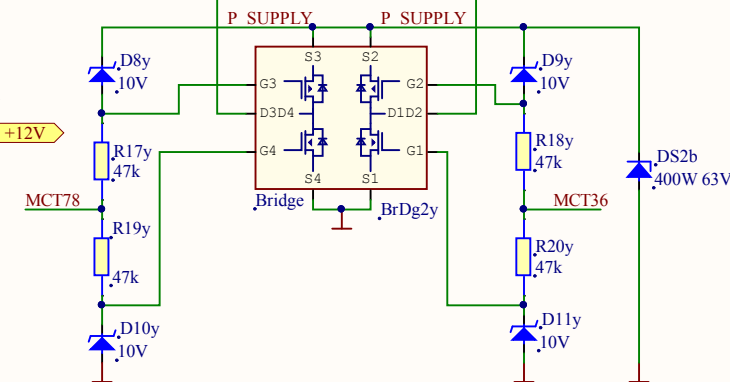
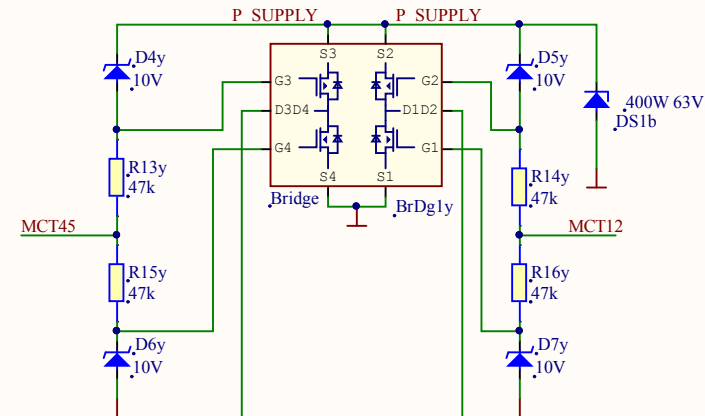
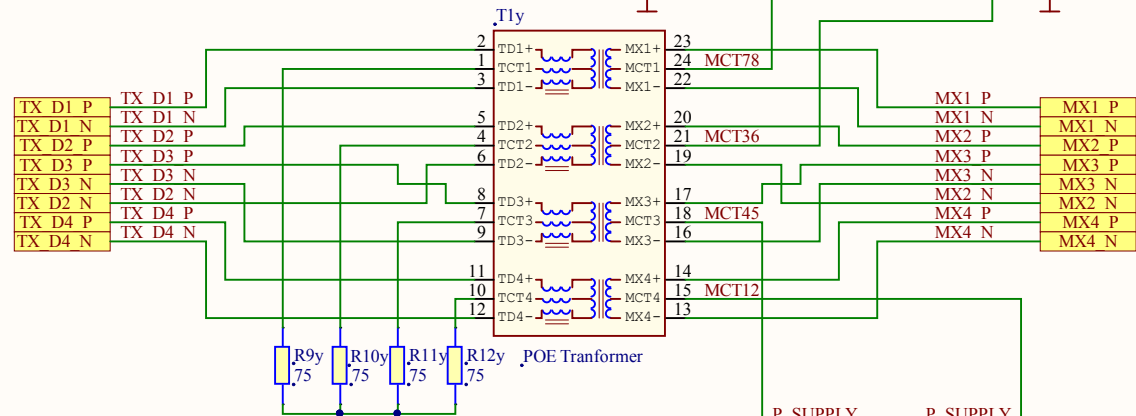
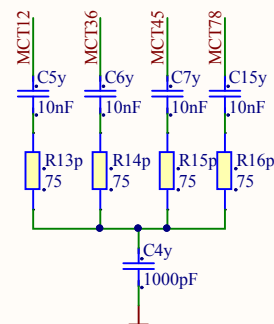
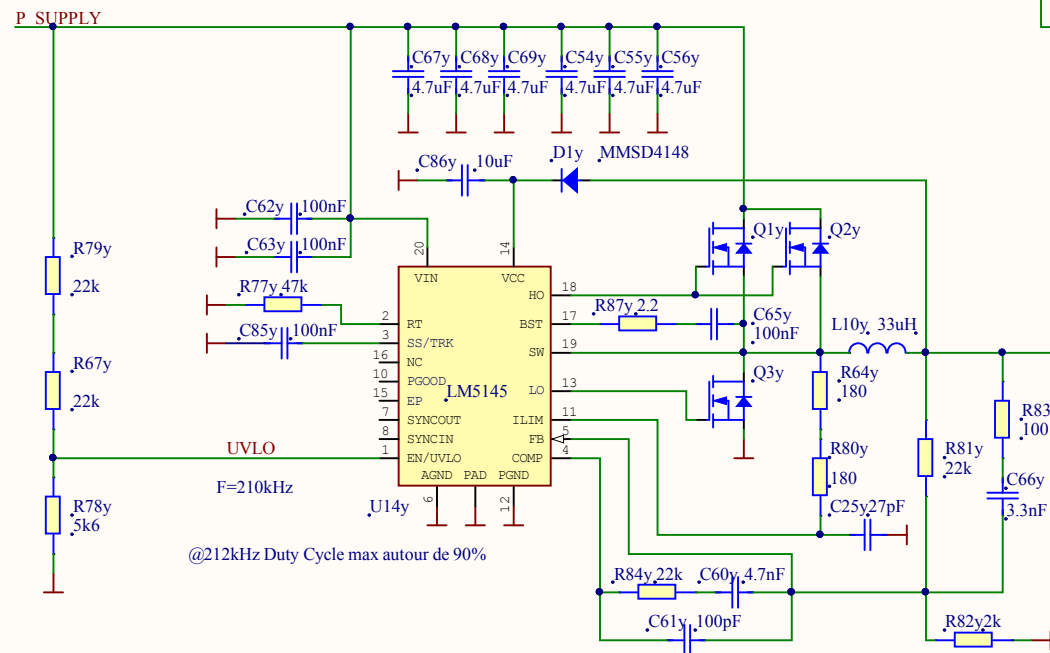
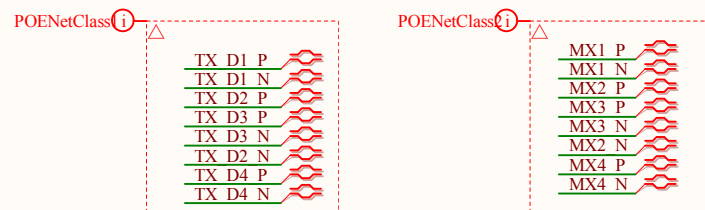
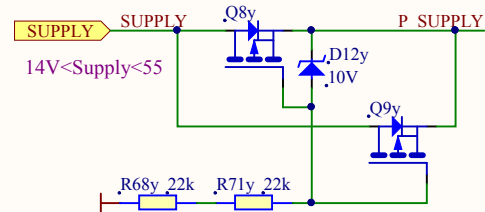


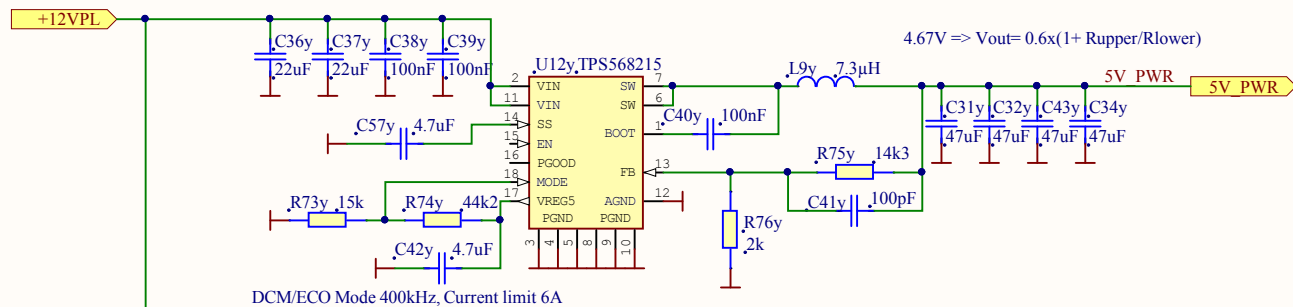
DiffPairNetClass



Title		
Size	Number	Revision
A4		
Date:	19/12/2018	Sheet of
File:	V:\Work\CtrlProg.SchDoc	Drawn By:



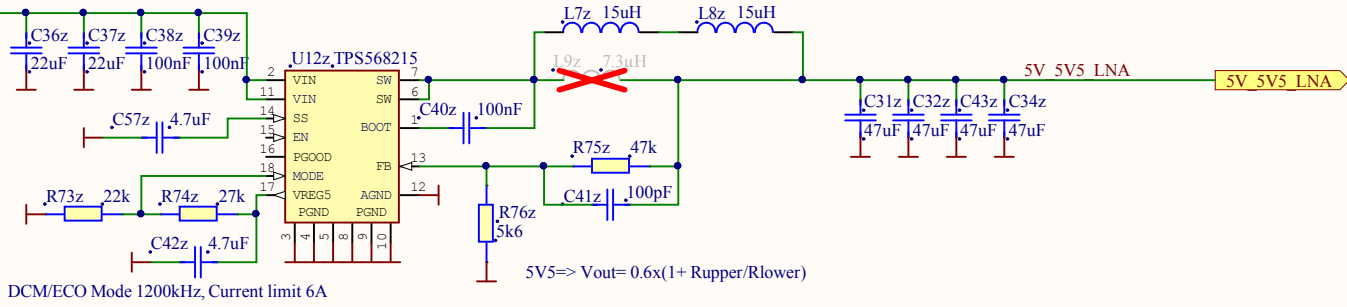
Title POE/SV		
Size A4	Number	Revision
Date: File:	19/12/2018 V:\Work\LowPwrLTE0.SchDoc	Sheet of Drawn By:



Soft Start
 $TSS(seconde)=CSS \times 0.6/6e-6 \Rightarrow 0.47s$

DCM/ECO Mode 400kHz, Current limit 6A

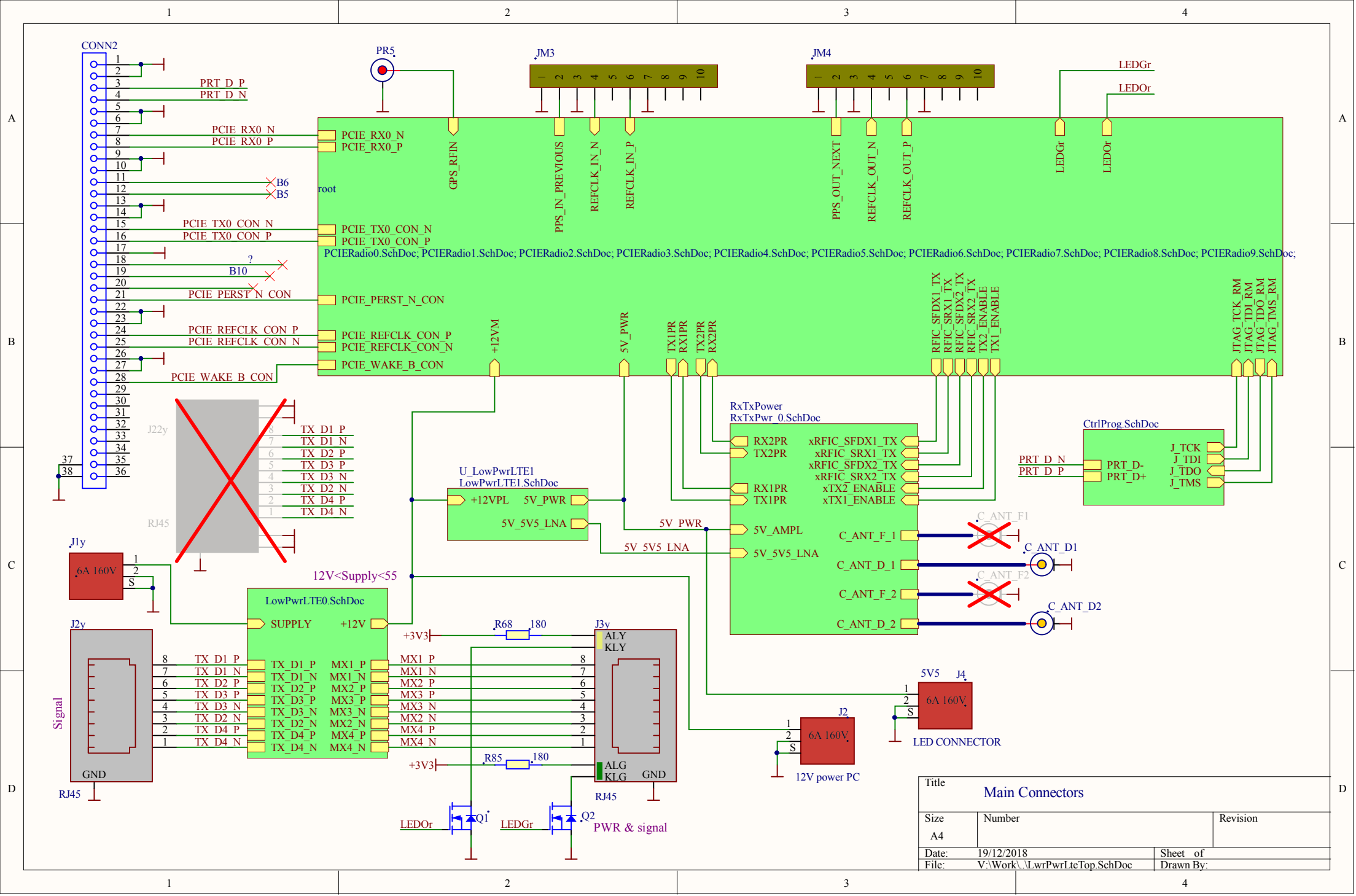
200mA Mettre plutôt un 22uH en cas de pB

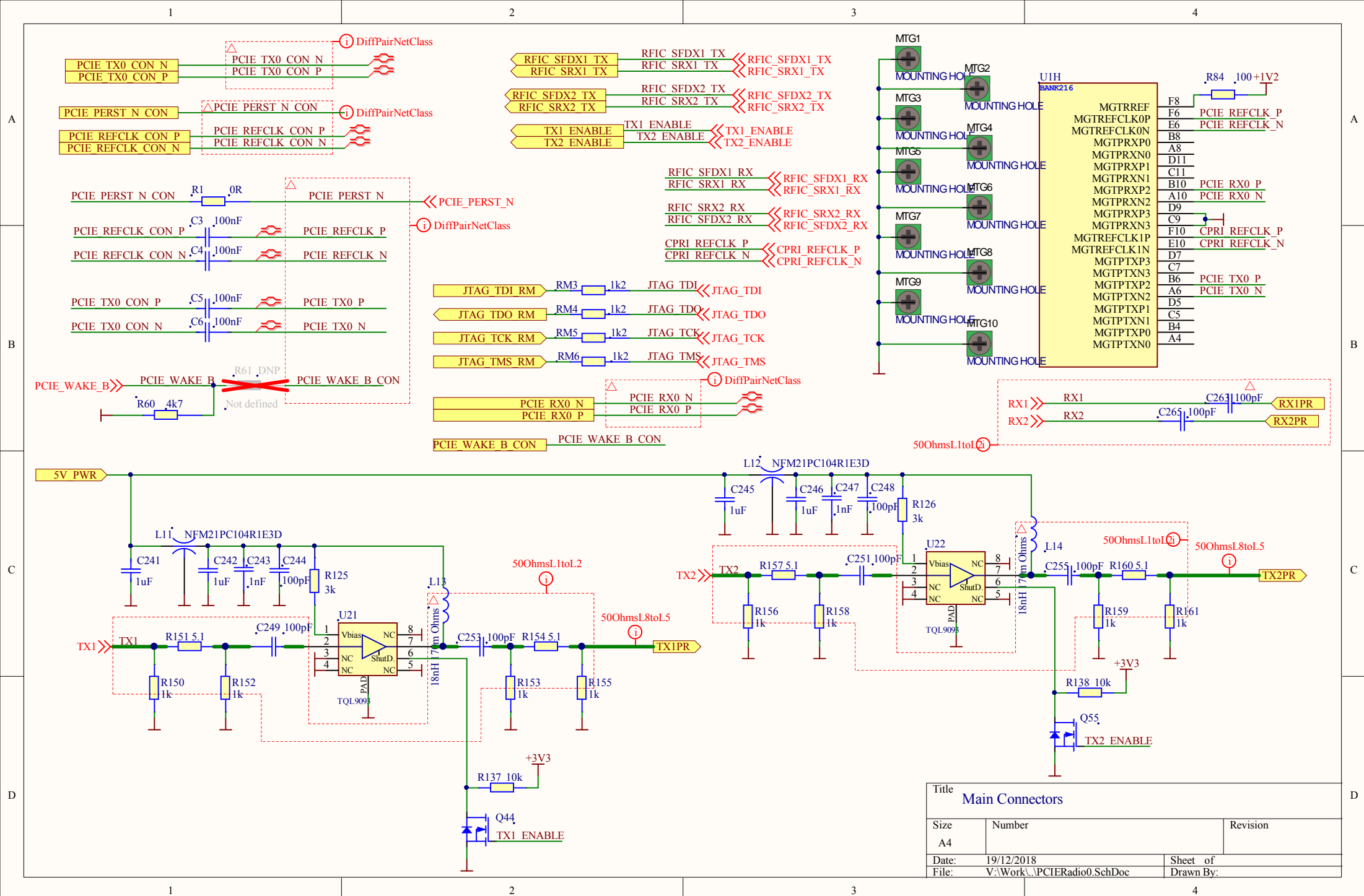


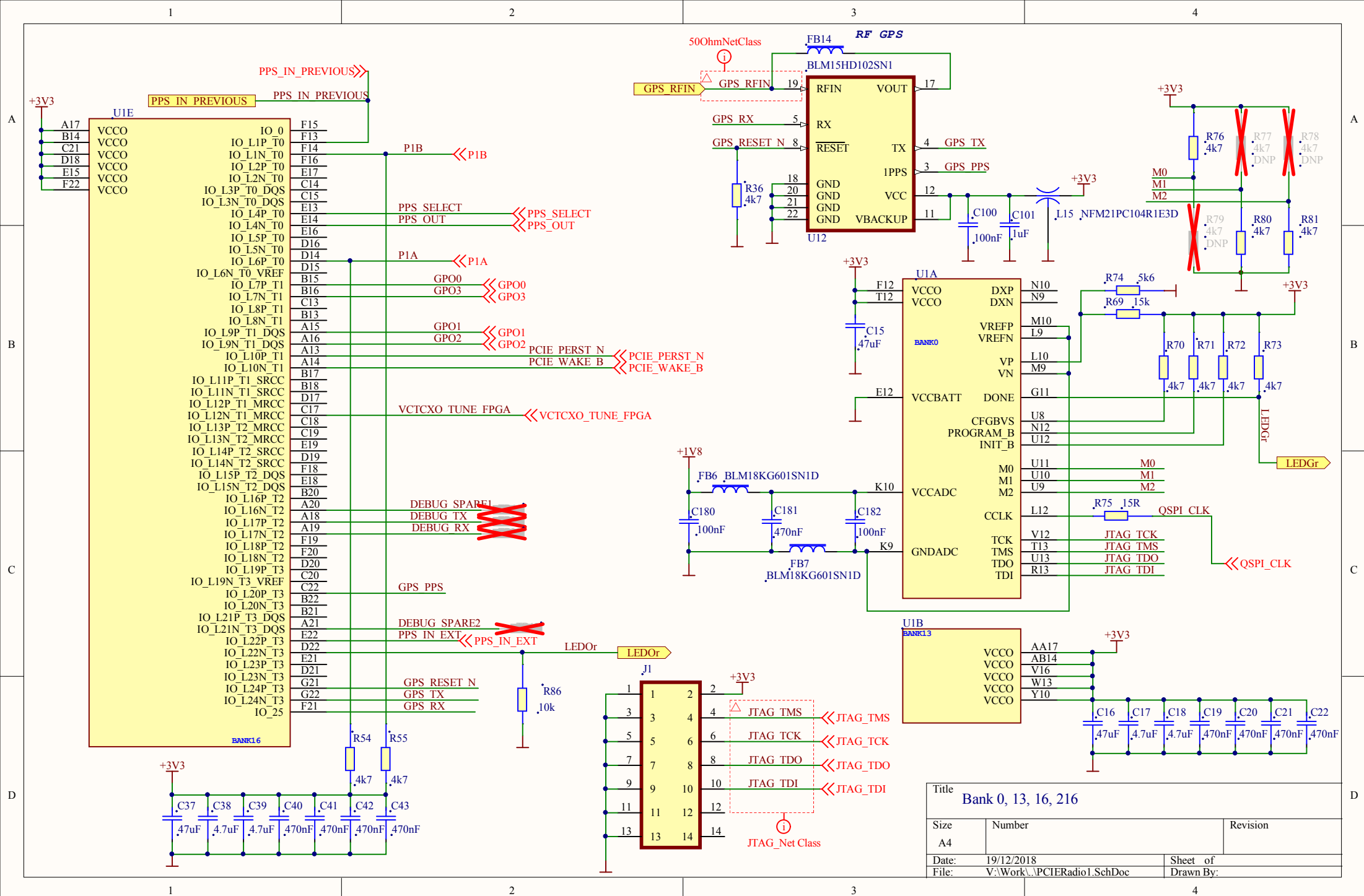
DCM/ECO Mode 1200kHz, Current limit 6A

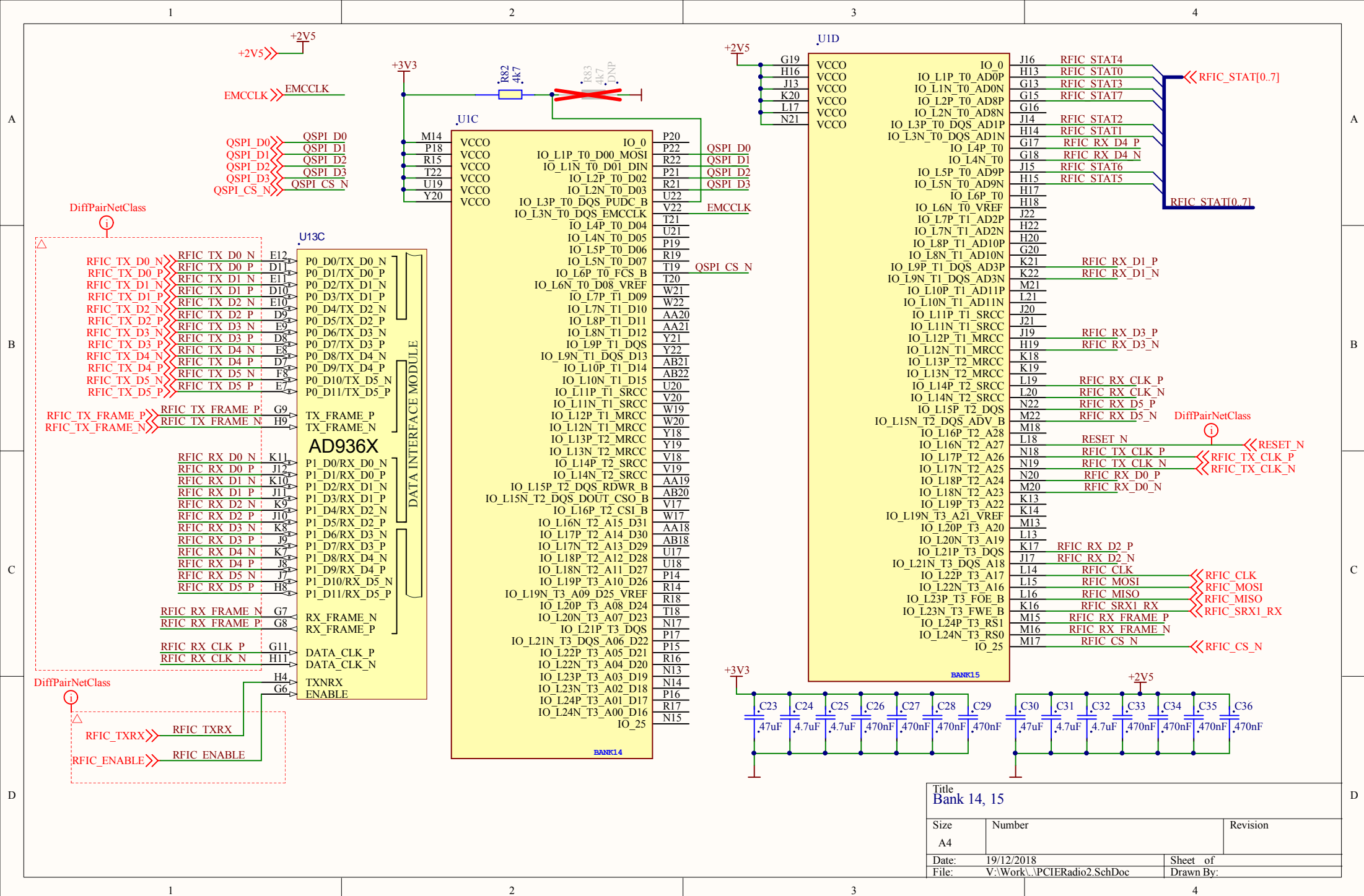
5V5=> $V_{out} = 0.6 \times (1 + R_{upper}/R_{lower})$

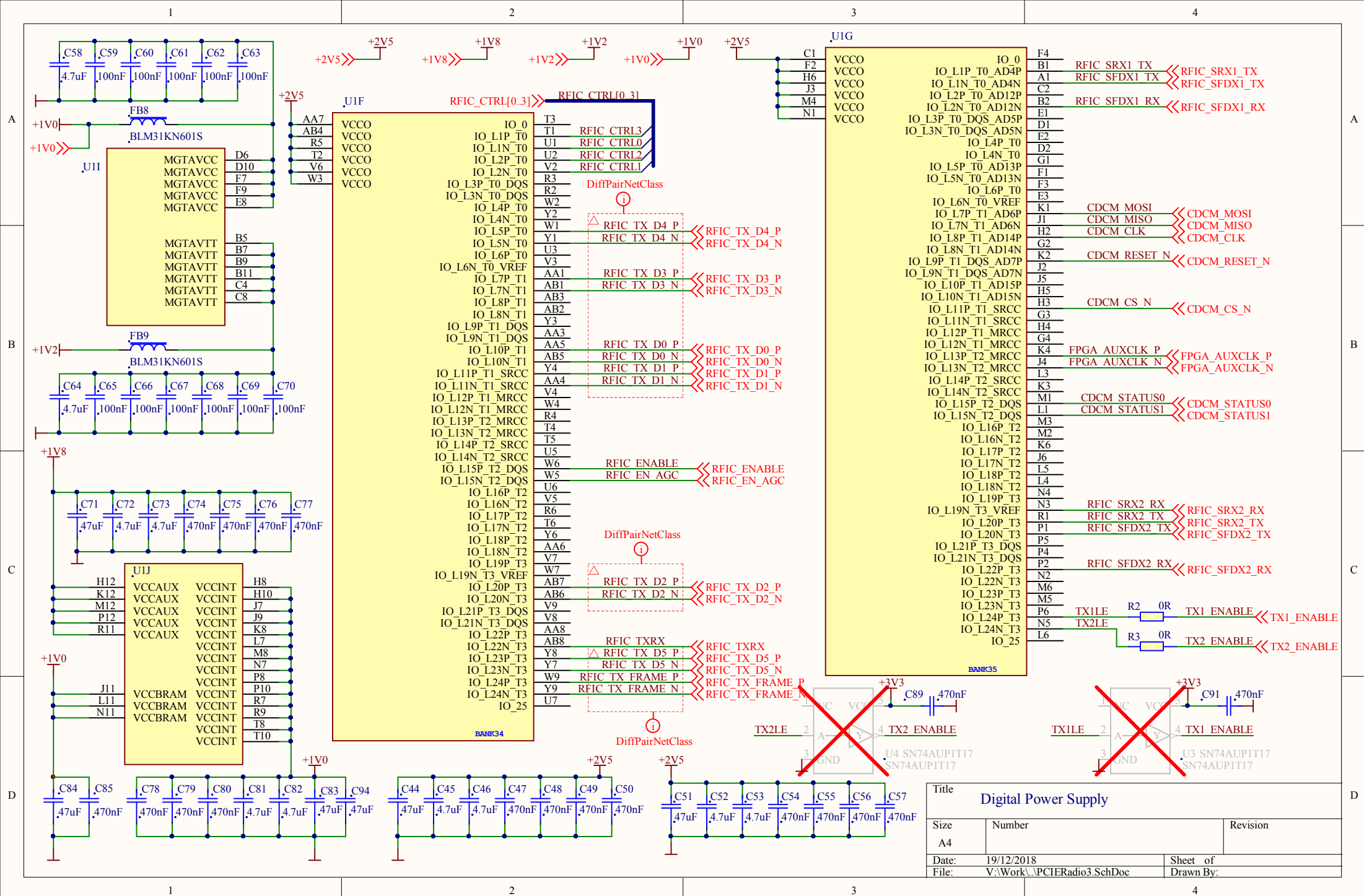
Title Main Connectors		
Size A4	Number	Revision
Date:	19/12/2018	Sheet of
File:	V:\Work\LowPwrLTE1.SchDoc	Drawn By:

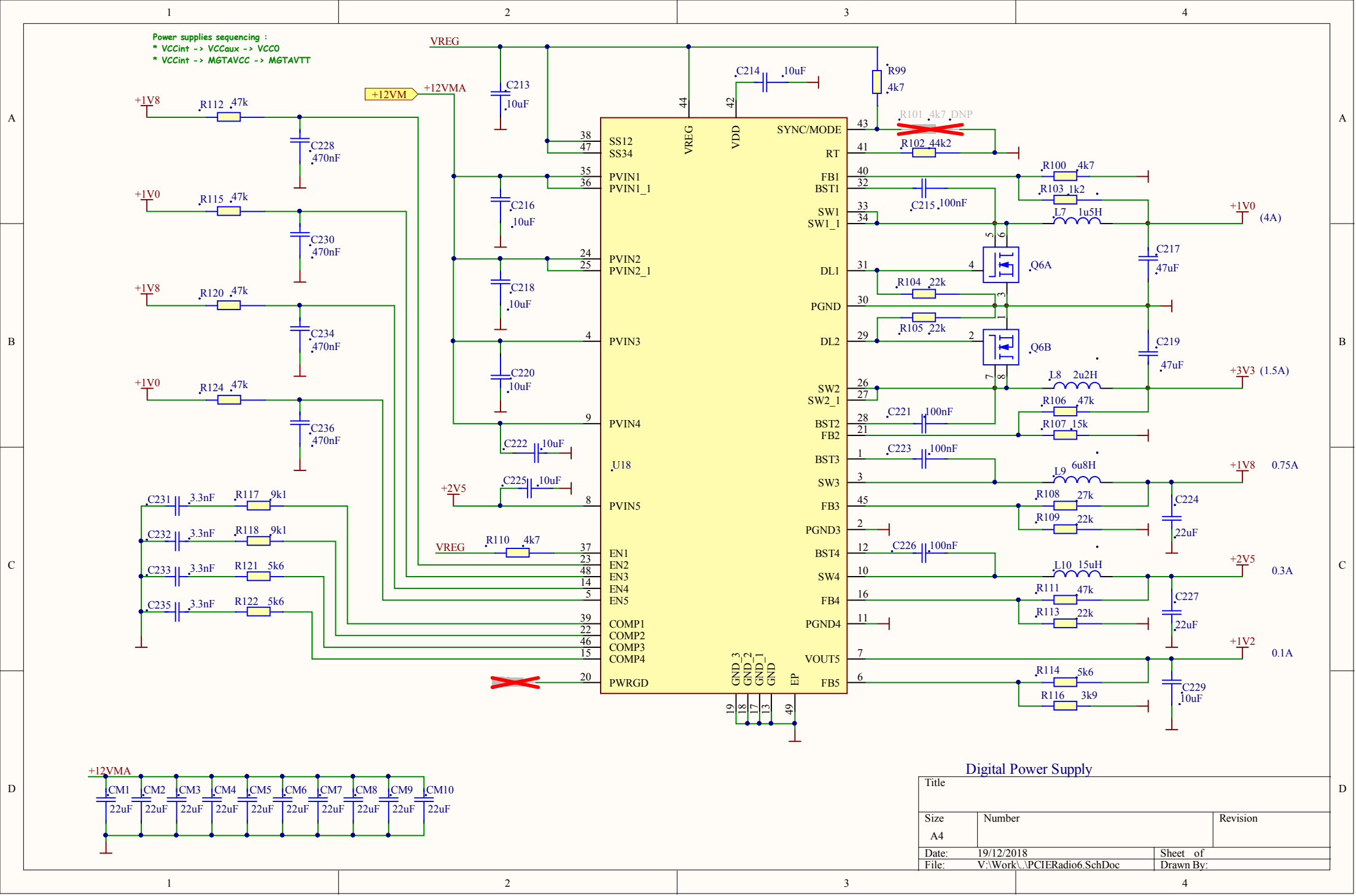


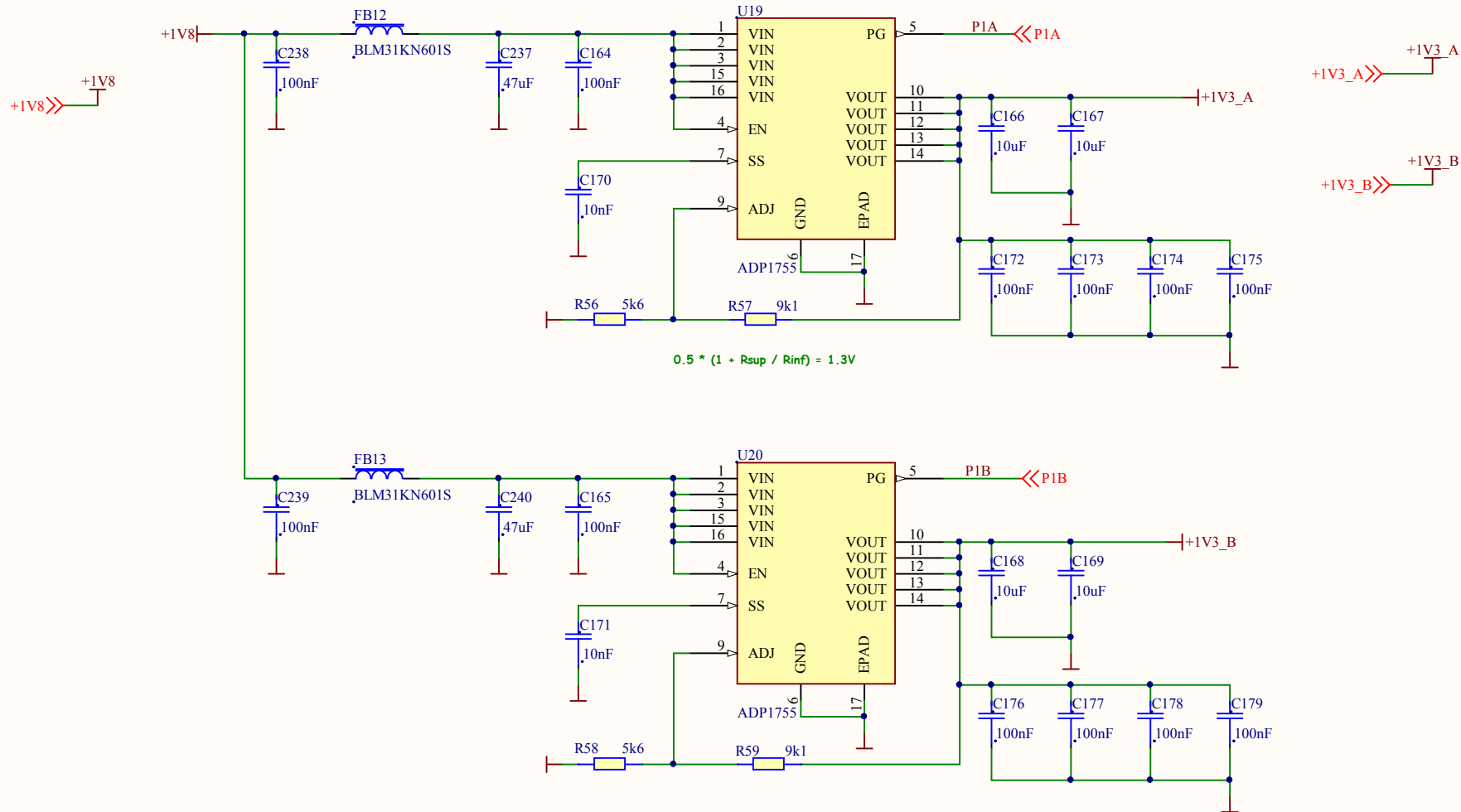












Title RF Power Supply		
Size A4	Number	Revision
Date: 19/12/2018	Sheet of	
File: V:\Work\PCIERadio7.SchDoc	Drawn By:	

A

A

B

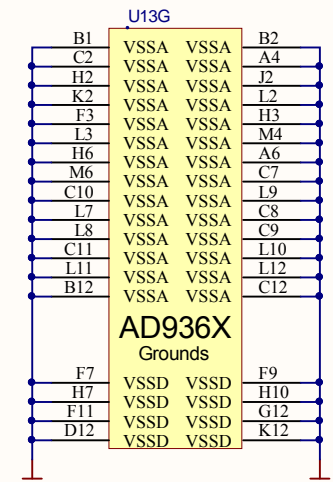
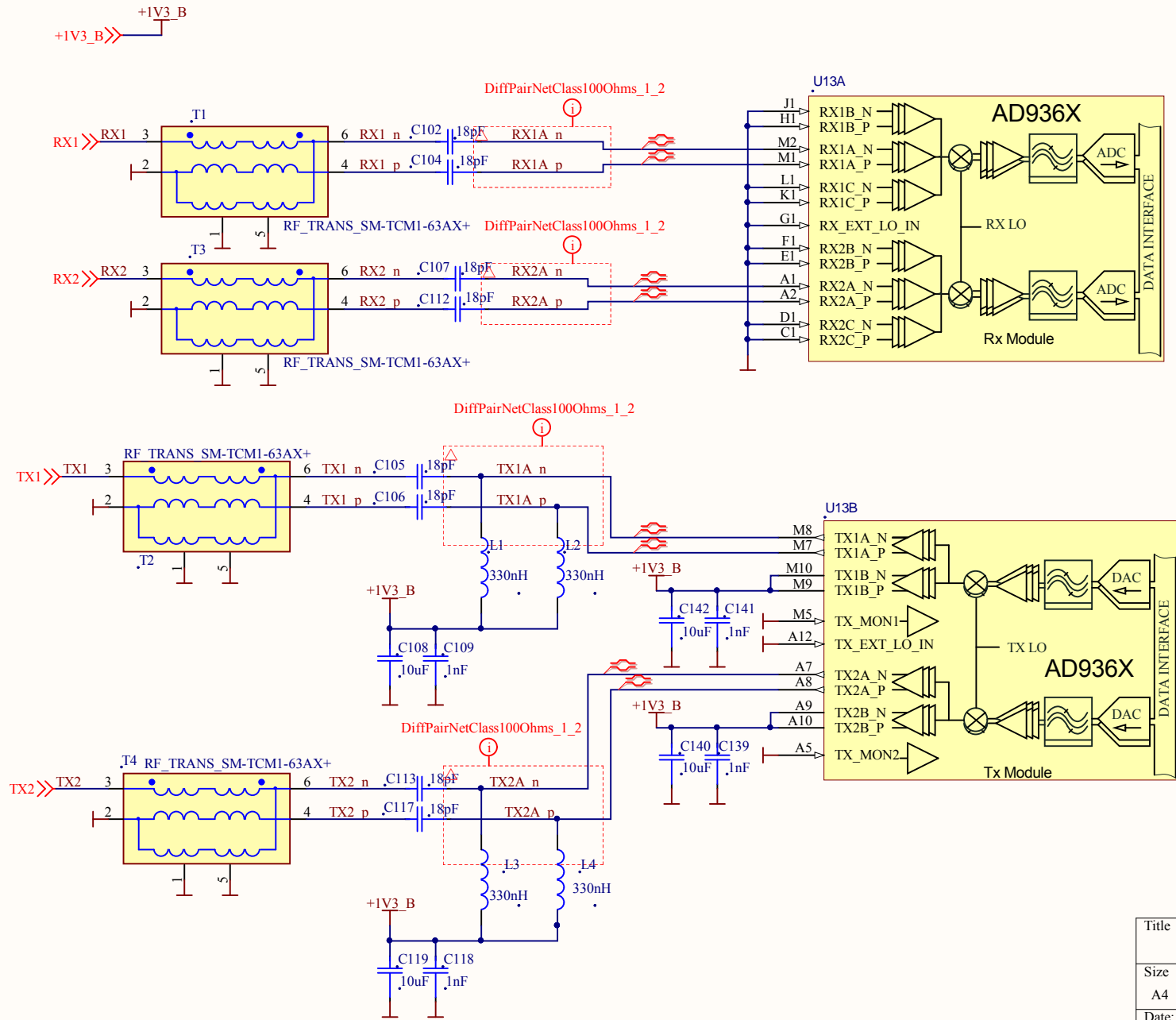
B

C

C

D

D



Title		
AD9360 1/2		
Size	Number	Revision
A4		
Date:	19/12/2018	Sheet of
File:	V:\Work\PCIERadio8.SchDoc	Drawn By:

A

A

B

B

C

C

D

D

